

.118"(3.0mm) Pitch Dual row Wire to Wire Connectors

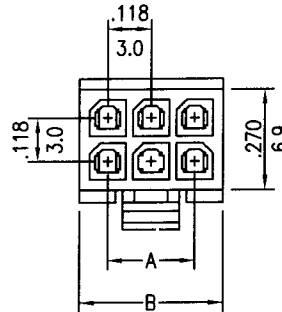


CH3025 Series

- * Poles:2-24
- * Material:Polyester, UL94V-0 BLACK
- * Suitable CT3025T series terminal
- * Mates with CH3020-XX H.S.G. and CW3045XX-XX HEADER

Specifications

- * Current rating: 3A AC, DC
- * Voltage rating: 250V AC, DC
- * Temperature range: -25°C~+85°C
- * Insulation resistance: 1,000MΩ min.
- * Withstand voltage: 1,500V AC/minute

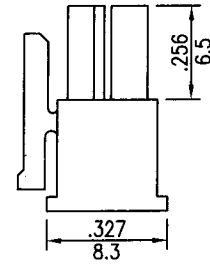
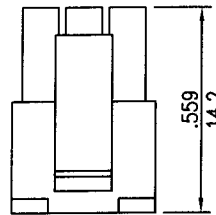
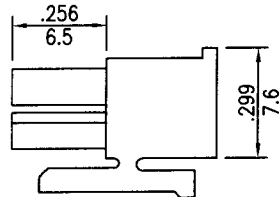
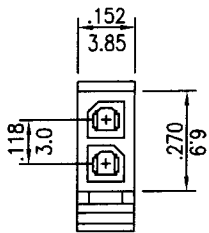


inches
mm

TOLERLANCE:

- 2~8P : A±0.15, B±0.20
- 10~16P : A±0.25, B±0.30
- 18~24P : A±0.35, B±0.40

2&4 CIRCUITS

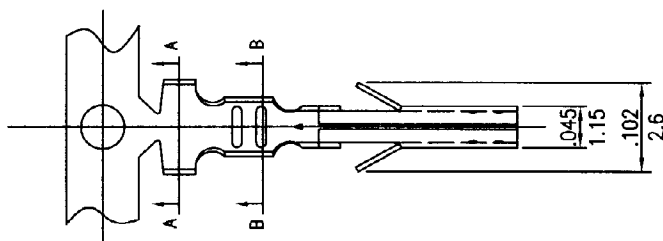


CIRCUITS	PART NO.	DIMENSION in.(mm)		CIRCUITS	PART NO.	DIMENSION in.(mm)	
		A	B			A	B
2	CH3025-2X1		0.152(3.85)	14	CH3025-2X7	0.709(18.0)	0.860(21.85)
4	CH3025-2X2	0.118(3.0)	0.270(6.85)	16	CH3025-2X8	0.827(21.0)	0.982(24.95)
6	CH3025-2X3	0.236(6.0)	0.388(9.85)	18	CH3025-2X9	0.945(24.0)	1.100(27.95)
8	CH3025-2X4	0.354(9.0)	0.506(12.85)	20	CH3025-2X10	1.063(27.0)	1.219(30.95)
10	CH3025-2X5	0.472(12.0)	0.624(15.85)	22	CH3025-2X11	1.181(30.0)	1.337(33.95)
12	CH3025-2X6	0.591(15.0)	0.742(18.85)	24	CH3025-2X12	1.299(33.0)	1.455(36.95)

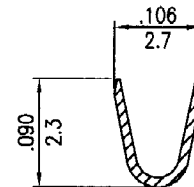
.118"(3.0mm) pitch crimp terminal

CT3025 Series

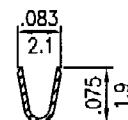
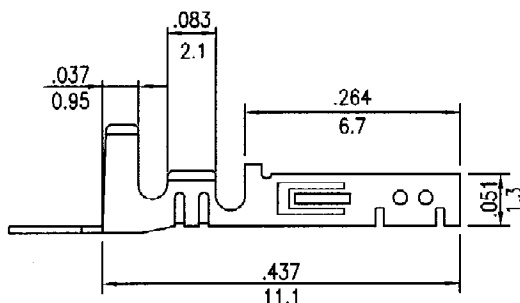
- * Material:Phosphor bronze
- * Finished:Tin-plated 60u"
- * Used in CH3025 series housings
- * Wire Range:AWG#22~#28
- * Thickness:0.20mm
- * Q'TY:10,000pcs/reel



inches
mm



A-A SECTION



B-B SECTION